

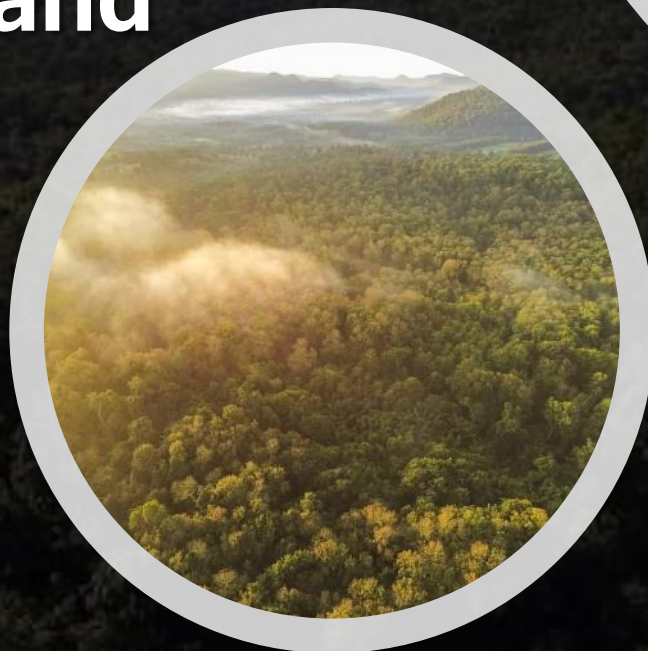


Achievements and lessons learnt Ngao Model Forest, Thailand

Presented by: Mr. Montri Intasen
Forestry Technical Officer, Senior Professional Level
Royal Forest Department, Thailand
E-mail: b_willam@hotmail.com

UNFF20 Side Event on May 9, 2025 at 1.15-2.30 pm.
Conference Room 7, UNHQ New York, U.S.A.

Credit of this presentation to Mr. Sumai Maimun and the Ngao Model Forest Association



- Ngao Forest located at Ngao District, Lampang Province, Northern Thailand.
- The landscape cover area total 1,751.59 sq km
- The left and right site of Ngao Forest is “high land” and the middle is “low land”





Land use type

FOREST

Mixed forest (44.47%)
Deciduous forest (13.81%)
Dry evergreen forest (2.39%)
Forest plantation (4.18%).

Agriculture

Corn
Fruit
Rice
Rubber
Teak

Value of Ngao Forest



Water Resources:

The forest plays a crucial role in maintaining the watershed of the region. It helps regulate the flow of rivers and streams, ensuring a steady supply of water



Biodiversity:

Ngao Forest is home to a rich variety of plant and animal species, some of which are rare or endemic to the region.



Research and Education: Ngao Forest serves as a living laboratory for scientific research and environmental education



Economic Benefits and livelihood: The forest supports local economies through sustainable activities like eco-tourism, non-timber forest products

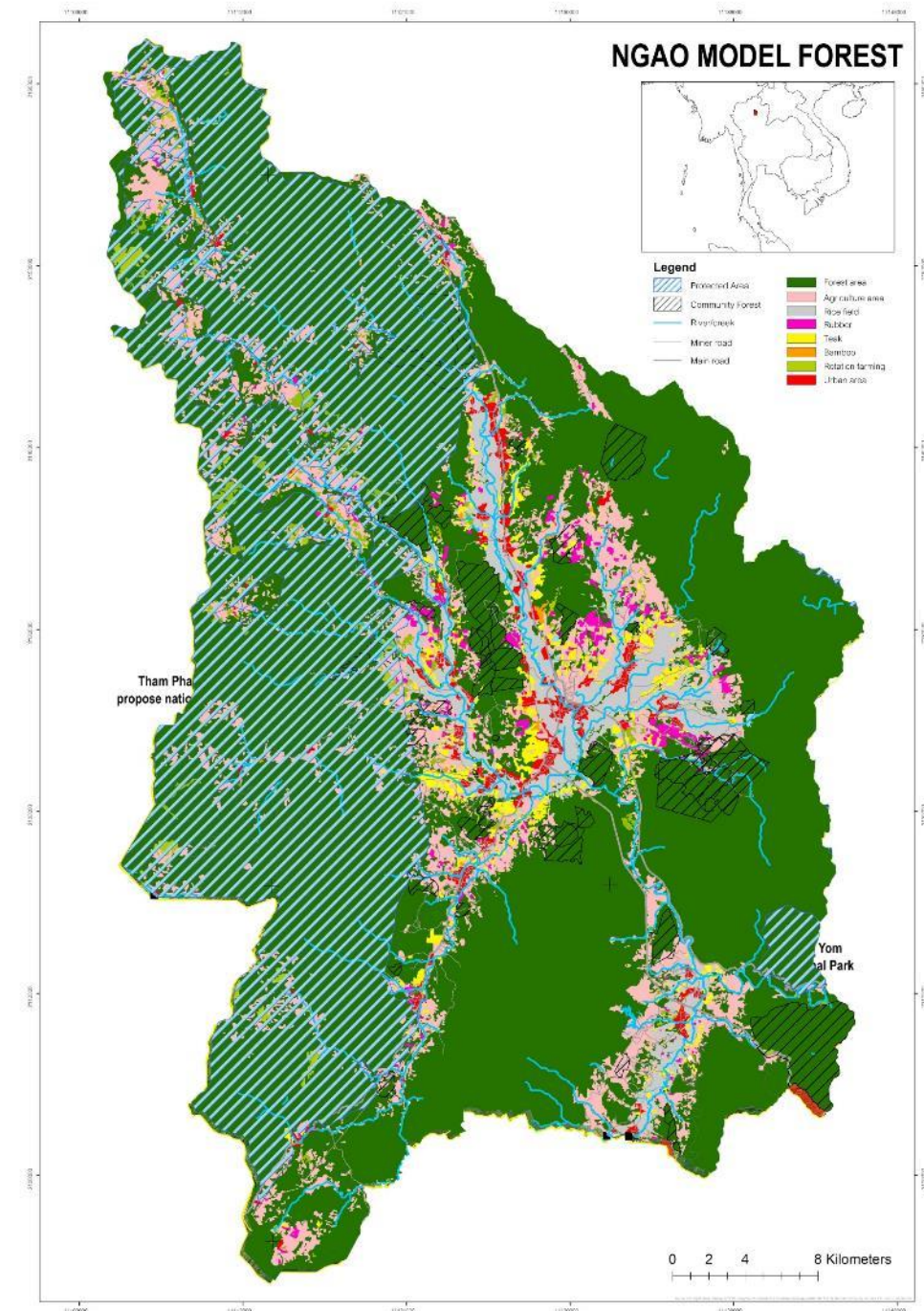


Cultural and Recreational Value: Ngao Forest holds cultural significance for local communities who may have historical and spiritual ties to the land

What happened in the past?

Deforestation:

During 2010-2012, the deforestation was increase caused from the social-economic changing ex; corn farming specially in the mountain area impacted to water resource and air quality from open burning and forest fire.



What have been changed?

✓ **The number of community forest increased**

2000

= Lower than 10 community forests

2025

= 58 community forests established and registered

What help to create change?

- ✓ **The active participation of community led projects to create sustainable nature based solutions**

Two key community-led projects of nature-based solution

- ✓ Forest fire volunteer group to protect the community forest
- ✓ Check-dam establishment within the community forest for the forest restoration

Sample activities-forest fire volunteer group

**Under Mekong-Lancang
Cooperation Special
Fund (MLC-SP)**



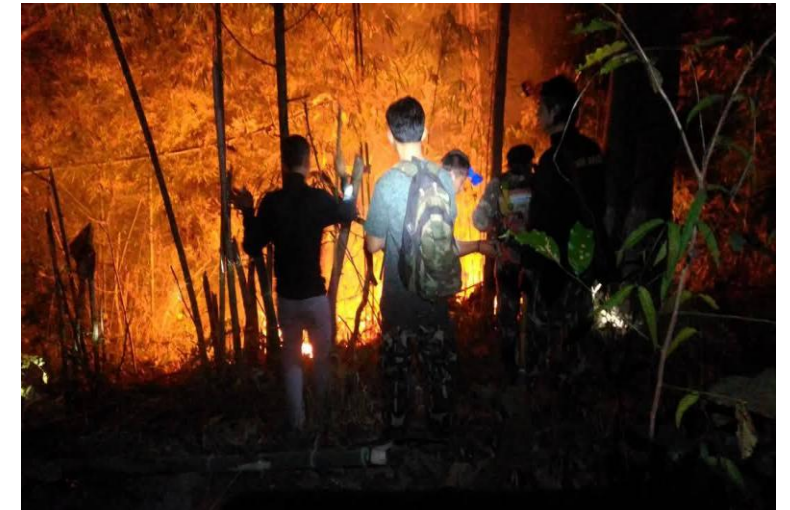
**Lancang-Mekong
Cooperation Special Fund**



A Comprehensive Study and Demonstration of Forest Fire Regimes, Impacts, and Management in LMC Countries: Towards Enhancing Forest Landscape Resilience to Climate and Ecosystem Changes

Output 1: Conduct of a stock-taking and analysis on forest fires in the LMC Landscape

Output 2: Pilot demonstrations on designing and building fire-resilient forest communities





Improved Local Community Livelihoods through Increased
Income from Non-timber Forest Products (NTFP):
Modelling scalable community-based enterprises in Asia

LAMPANG on The Move

Ngao Model Forest

Enchanting : Community Forest Management

Scaling up : Non -Timber Product to Local Green Economy

Non-Timber Product TREE BARK



Non-Timber Forest Products: Lac

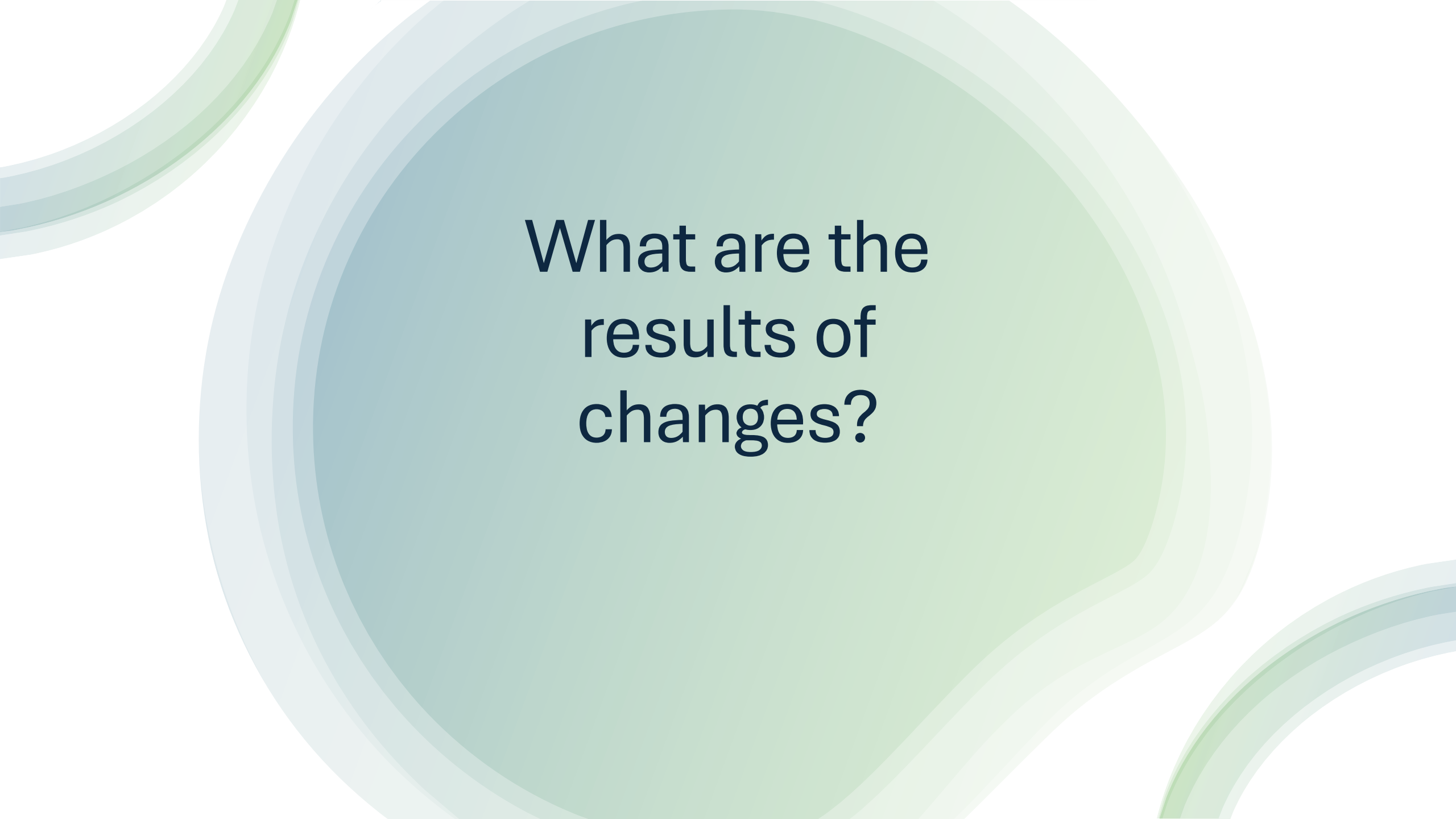


Source: thaifarmer.lib.ku.ac.th



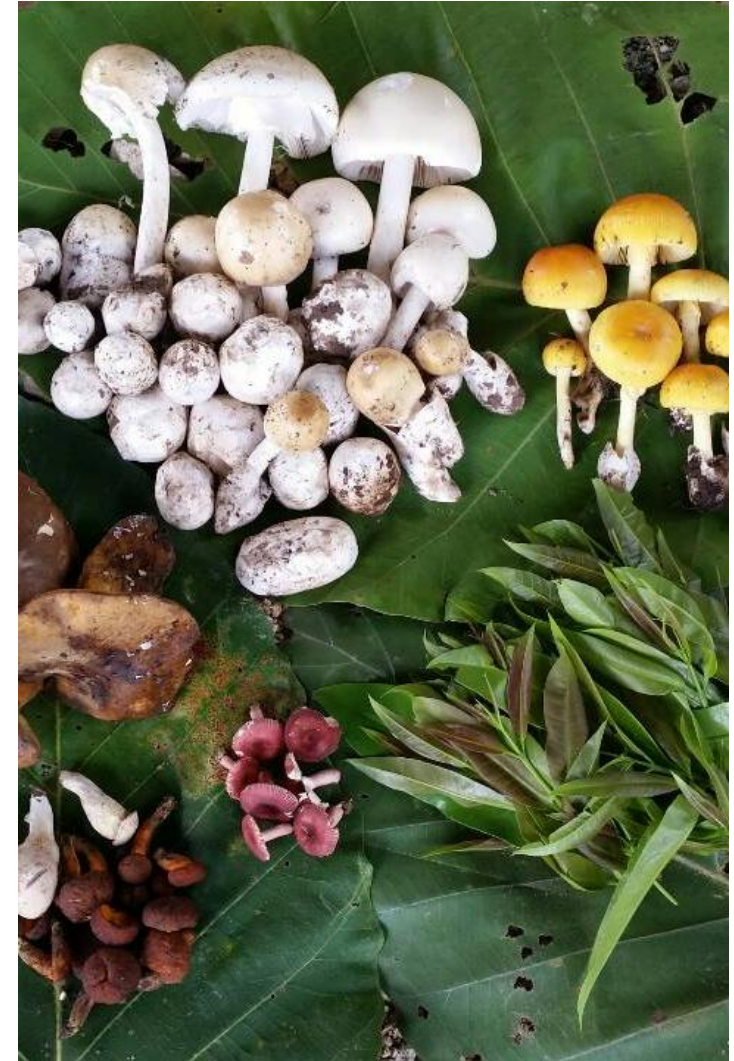
Source: forest.go.th

<https://www.rmfnasia.org>



What are the
results of
changes?

1. Ecosystem and Bio- diversity are enhanced



2. The human well-being is improved



Increase of edible plants



Edible insects in MF



Thank you

